



REACTOR JACKET

J3887 UNISEX

This jacket is just what you want on your back when the temperature dips. Medium weight, water repellent exterior with micro fleece lining to keep you warm and seal out the elements.

FABRIC

Outer: 100% Polyester with reflective piping

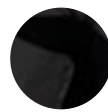
- Body Lining: 100% Polyester, lightweight poly fleece
- Sleeve Lining: 100% Polyester Taffeta

FEATURES

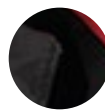
High wind collar with concealed hood and adjustable drawstrings • 2 Concealed zippered front pockets • Right vertical zippered chest pocket and quick-close tape fastener inside left breast pocket • Elasticated adjustable sleeve cuffs • Inside zip access for embroidery



COLOURS



BLACK/
GRAPHITE



BLACK/
RED



NAVY/
GRAPHITE

GARMENT MEASUREMENTS

J3887 MENS MODERN FIT	S	M	L	XL	2XL	3XL	5XL
GARMENT ½ CHEST (CM)	58	60	62	64	66.5	70	75

ALL MEASUREMENTS ARE APPROXIMATE AND ARE FOR REFERENCE ONLY. COLOURS ARE REPRODUCED AS CLOSELY AS PRINTING ALLOWS.